



Project Name:

Part Number:

Fixture Type:

WPRB Series Selectable Architectural Wall Pack Light



KEY FEATURES

- 3CCT(3000/4000/5000K) and 4 Wattages Selectable offer SKU reduction
- ADC12 Aluminum die-casting housing provides excellent heat dissipation
- Microwave motion sensor and emergency driver available
- DIP switch for Full, Down lighting modes
- Automated Dusk to Dawn photocell functionality
- AC120-277V & High efficacy up to 155 lm/W
- Wet location rated IP65

ORDERING INFORMATION

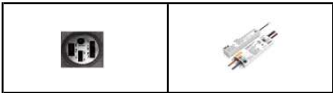


EXAMPLE: WPRB 40W LCS BZ UNV						
Series	Wattage Selectable	CCT Selectable	Distribution Selectable	Finish	Voltage	Options
WPRB Architectural Wall Pack Light	15W - 2325 lm	LCS 3000K 4000K 5000K	DN Down Lighting	BZ Dark Bronze RP* Custom Color	UNV 120-277V	Blank
	20W - 3100 lm					No Accessories
	30W - 4650 lm					PCTM Integrated Photocell (default)
	40W - 6200 lm					EB4 Emergency Battery 4W for 40W
	40W - 6400 lm	EB8 Emergency Battery 8W for 80W				
	50W - 7750 lm					
	60W - 9300 lm					
	80W - 12400 lm					
	60W - 9600 lm					
	90W - 13950 lm					
	100W - 15500 lm					
	120W - 18600 lm					

*For custom color, please contact regional sales for details. **Accessories & Options must order separately.

For stocking opportunities, please contact your local ORE Lighting rep or sales@orelighting.com. Lead times may vary based on current inventory levels - always consult your local ORE Lighting rep for lead times and project needs.

ACCESSORIES



PCTM
Integrated Photocell
(Default)

EB4 & EB8
4W/8W 600/1200 lm
(Sold separately)



OFFERING 4 WATTAGE AND 3 CCT FIELD SELECTABLE

The full cutoff LED wall pack is easily customizable to fit every building's design aesthetic and a mix of architectural styling and energy savings. The rugged, die-cast aluminum housing makes the wall pack virtually impenetrable to contaminants.



Accessories shown are generally stocked items; for additional accessory questions and options, please contact your local ORE Lighting rep or email sales@orelighting.com. Options for spec needs are available through a special request - please contact sales@orelighting.com with spec needs and project size.



SPECIFICATIONS

CONSTRUCTION

ADC12 cast-aluminum housing with bronze polyester powder paint for outdoor applications. Casting thermally conducts LED heat to optimize performance and long life.

ELECTRICAL

Standard 50/60Hz operation with 120/277V input
0-10V dimming standard for a dimming range of 100% to 10%.

CCT SELECTABLE

Switch selectable
3000K / 4000K / 5000K; CRI > 80+

LUMENS SELECTABLE

Selectable lumen packages ranging from 2,325 to 18,600 lm

EFFICACY

Up to 155 lumens per watt

LIFESPAN

Estimated 50,000 – hour LED lifespan based on IES LM-80 results and TM-21 calculations.

AMBIENT TEMPERATURE

Suitable for use in -40°F to 122°F (-40°C to 50°C)

OPTICS

Tempered UV coated flat lens provide outstanding performance, uniformity and glare control.

SURGE PROTECTION

L/N 6KV, L/N-P 6KV for 40W & 80W
L/N 6KV, L/N-P 10KV for 120W

FINISH

Polyester Powder Dark Bronze finish. Custom colors available. Multiple stage process to produce 3 mil thickness for superior corrosion resistance and maximum durability.

CERTIFICATIONS

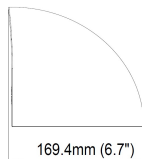
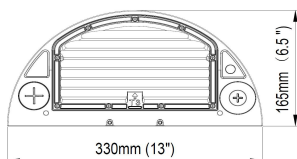
UL Listed for wet locations. Equivalent to IP65 rating

WARRANTY

5 year limited warranty. Comprehensive warranty terms can be located on www.orelighting.com

DIMENSIONS

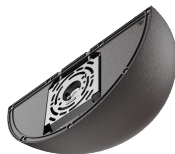
unit: mm / inch



Net Weight

6.08 lbs

40W/80W/120W



Security Lighting
Perimeter Lighting
Building Entrances
Walkways, etc

Houston, Texas

Sales@orelighting.com

346-874-7955

www.orelighting.com

Note: Information contained herein is subject to change without notice.

3203 S Sam Houston Pkwy E, # 100, Houston, TX 77047

©2025 ORE Lighting INC. All rights reserved


Updated date: 12/10/2025

PERFORMANCE DATA

PART NUMBER	POWER	WATTAGE	3000K		4000K		5000K	
			LUMENS	EFFICACY	LUMENS	EFFICACY	LUMENS	EFFICACY
WPRB 40	40%	15W	2,325	155 lm/w	2,325	155 lm/w	2,340	156 lm/w
	60%	20W	3,100	155 lm/w	3,100	155 lm/w	3,120	156 lm/w
	80%	30W	4,650	155 lm/w	4,650	155 lm/w	4,680	156 lm/w
	100%	40W	6,200	155 lm/w	6,200	155 lm/w	6,240	156 lm/w
WPRB 80	40%	40W	6,400	156 lm/w	6,400	156 lm/w	6,400	156 lm/w
	60%	50W	7,750	155 lm/w	7,750	155 lm/w	7,800	156 lm/w
	80%	60W	9,300	155 lm/w	9,300	155 lm/w	9,360	156 lm/w
	100%	80W	12,400	155 lm/w	12,400	155 lm/w	12,480	156 lm/w
WPRB 120	40%	60W	9,600	156 lm/w	9,600	156 lm/w	9,600	156 lm/w
	60%	90W	13,950	155 lm/w	13,950	155 lm/w	14,040	156 lm/w
	80%	100W	15,500	155 lm/w	15,500	155 lm/w	15,600	156 lm/w
	100%	120W	18,600	155 lm/w	18,600	155 lm/w	18,720	156 lm/w


ELECTRICAL LOAD

PART NUMBER	WATTAGE	Current (A)			
		120V	208V	240V	277V
WPRB 40	15W	0.12	0.07	0.06	0.05
	20W	0.16	0.09	0.08	0.07
	30W	0.25	0.14	0.13	0.11
	40W	0.33	0.19	0.17	0.14
WPRB 80	40W	0.33	0.19	0.17	0.14
	50W	0.42	0.24	0.21	0.18
	60W	0.5	0.28	0.25	0.22
	80W	0.66	0.38	0.33	0.28
WPRB 120	60W	0.50	0.28	0.25	0.22
	90W	0.75	0.43	0.38	0.32
	100W	0.83	0.48	0.42	0.36
	120W	1.00	0.57	0.50	0.43




CCT and Wattage controller
This fixture has the function of adjusting the lumens output and color temperature on-site

Dip switch photocell on/off
Use with or without Built-in Dusk to Dawn Photocell



Housing
Rugged die-cast housing with corrosion-resistant powder coating for effective protection

Emergency Battery Backup
4W battery backup - 600 lm - 90 min



100% Down