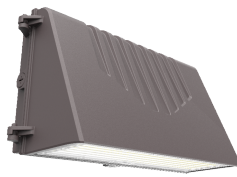


WPLR Series Selectable Full Cutoff Wall Pack Light



40W



80W / 120W

KEY FEATURES

- 3CCT(3000/4000/5000K) and 4 Wattages Selectable offer SKU reduction
- ADC12 Aluminum die-casting housing provides excellent heat dissipation
- Microwave motion sensor and emergency driver available
- Automated Dusk to Dawn photocell functionality
- AC120-277V & High efficacy up to 170 lm/W
- Wet location rated IP65 & DLC Premium 6.0

ORDERING INFORMATION



EXAMPLE: **WPLR 40W LCS BZ UNV**

| Series | Wattage Selectable | CCT Selectable | Finish | Voltage | Options |
|-----------------------------------------|--------------------|---------------------------------------|--------------------------|------------------------|------------------------------------------------------------------------------------------------------------------------------------------------------------------|
| WPLR Full Cutoff Wall Pack Light | 15W - 2550 lm | LCS 3000K 4000K 5000K | BZ Dark Bronze | UNV 120-277V | Blank No Accessories PCTM Intergrated Photocell (default) MPS PIR motion sensor EB8 Emergency Battery Backup 8W |
| | 20W - 3400 lm | | | | |
| | 30W - 5100 lm | | | | |
| | 40W - 6800 lm | | | | |
| | 40W - 6800 lm | | | | |
| | 50W - 8500 lm | | | | |
| | 60W - 10200 lm | | | | |
| | 80W - 13600 lm | | | | |
| | 60W - 10200 lm | | | | |
| | 90W - 15300 lm | | | | |
| | 100W - 17000 lm | | | | |
| | 120W - 20400 lm | | | | |

*For custom color, please contact regional sales for details. **Accessories & Options must order separately.

For stocking opportunities, please contact your local ORE Lighting rep or sales@orelighting.com. Lead times may vary based on current inventory levels - always consult your local ORE Lighting rep for lead times and project needs.

ACCESSORIES



MPS
PIR sensor
(Sold separately)

PCTM
Intergrated Photocell
(Default)

EB8
8W 1200 lm 90 min
(Sold separately)



OFFERING 4 WATTAGE AND 3 CCT FIELD SELECTABLE

The full cutoff LED wall pack is easily customizable to fit every building's design aesthetic and a mix of architectural styling and energy savings. The rugged, die-cast aluminum housing makes the wall pack virtually impenetrable to contaminants.



Accessories shown are generally stocked items; for additional accessory questions and options, please contact your local ORE Lighting rep or email sales@orelighting.com. Options for spec needs are available through a special request - please contact sales@orelighting.com with spec needs and project size.

SPECIFICATIONS

CONSTRUCTION

ADC12 cast-aluminum housing with bronze polyester powder paint for outdoor applications. Casting thermally conducts LED heat to optimize performance and long life. The design with zero uplight meets the requirements of dark sky

ELECTRICAL

Standard 50/60Hz operation with 120/277V input
0-10V dimming standard for a dimming range of 100% to 10%.

OPTICS

Tempered UV coated flat lens provide outstanding performance, uniformity and glare control.

CCT SELECTABLE

Switch selectable
3000K / 4000K / 5000K; CRI > 80+

LUMENS SELECTABLE

Selectable lumen packages ranging from 2,550 to 20,400 lm

EFFICACY

Up to 170 lumens per watt

AMBIENT TEMPERATURE

Suitable for use in -40°F to 113°F (-40°C to 45°C)

MOUNTING

Die-cast back box with four conduit entry points and knockout pattern for junction box or direct wall mounting. Hinged housing and bubble level included for easy installation

LIFESPAN

Estimated 50,000 – hour LED lifespan based on IES LM-80 results and TM-21 calculations.

FINISH

Polyester Powder Dark Bronze finish. Custom colors available. Multiple stage process to produce 3 mil thickness for superior corrosion resistance and maximum durability.

CERTIFICATIONS

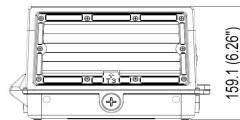
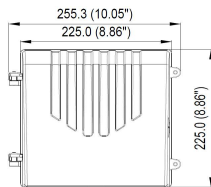
UL Listed for wet locations. Equivalent to IP65 rating
Design Lights Consortium - DLC 6.0 Premium qualified Product

WARRANTY

5 year limited warranty. Comprehensive warranty terms can be located on www.orelighting.com

DIMENSIONS

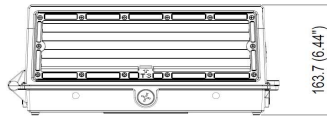
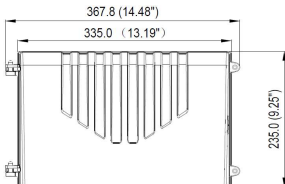
unit: mm / inch



Net Weight

5.72 lbs

40W



Net Weight

6.61 lbs

80W/120W



Security Lighting
Perimeter Lighting
Building Entrances
Walkways, etc

Houston, Texas

Sales@orelighting.com

346-874-7955

www.orelighting.com

Note: Information contained herein is subject to change without notice.

3203 S Sam Houston Pkwy E, # 100, Houston, TX 77047

©2026 ORE Lighting INC. All rights reserved

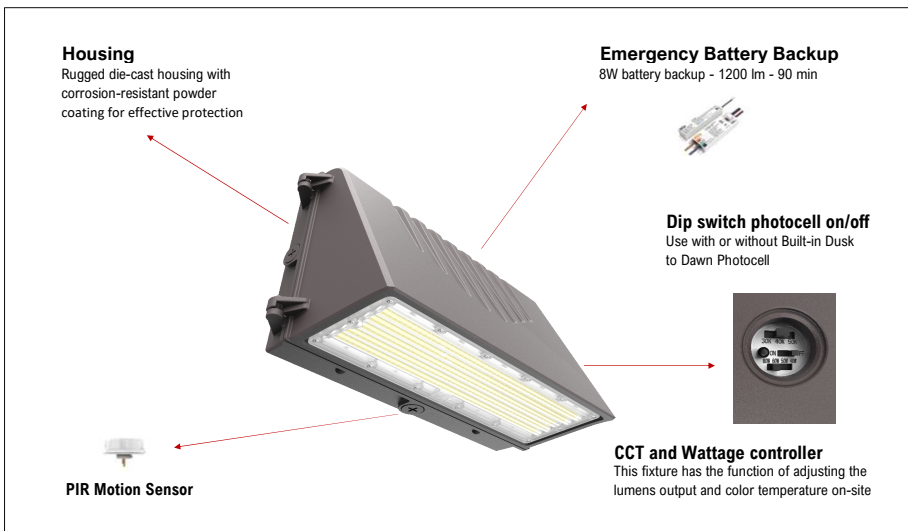
Updated date: 05/27/2026

PERFORMANCE DATA

| PART NUMBER | POWER | WATTAGE | 3000K | | 4000K | | 5000K | |
|-------------|-------|---------|--------|----------|--------|----------|--------|----------|
| | | | LUMENS | EFFICACY | LUMENS | EFFICACY | LUMENS | EFFICACY |
| WPLR 40 | 40% | 15W | 2,550 | 170 lm/w | 2,550 | 170 lm/w | 2,565 | 171 lm/w |
| | 60% | 20W | 3,400 | 170 lm/w | 3,400 | 170 lm/w | 3,420 | 171 lm/w |
| | 80% | 30W | 5,100 | 170 lm/w | 5,100 | 170 lm/w | 5,130 | 171 lm/w |
| | 100% | 40W | 6,800 | 170 lm/w | 6,800 | 170 lm/w | 6,840 | 171 lm/w |
| WPLR 80 | 40% | 40W | 6,800 | 170 lm/w | 6,800 | 170 lm/w | 6,840 | 171 lm/w |
| | 60% | 50W | 8,500 | 170 lm/w | 8,500 | 170 lm/w | 8,550 | 171 lm/w |
| | 80% | 60W | 10,200 | 170 lm/w | 10,200 | 170 lm/w | 10,260 | 171 lm/w |
| | 100% | 80W | 13,600 | 170 lm/w | 13,600 | 170 lm/w | 13,680 | 171 lm/w |
| WPLR 120 | 40% | 60W | 10,260 | 171 lm/w | 10,260 | 171 lm/w | 10,260 | 171 lm/w |
| | 60% | 90W | 15,390 | 171 lm/w | 15,390 | 171 lm/w | 15,390 | 171 lm/w |
| | 80% | 100W | 17,100 | 171 lm/w | 17,100 | 171 lm/w | 17,100 | 171 lm/w |
| | 100% | 120W | 20,520 | 171 lm/w | 20,520 | 171 lm/w | 20,520 | 171 lm/w |

ELECTRICAL LOAD

| PART NUMBER | WATTAGE | Current (A) | | | |
|-------------|---------|-------------|------|------|------|
| | | 120V | 208V | 240V | 277V |
| WPLR 40 | 15W | 0.13 | 0.07 | 0.06 | 0.05 |
| | 20W | 0.16 | 0.09 | 0.08 | 0.07 |
| | 30W | 0.25 | 0.14 | 0.13 | 0.10 |
| | 40W | 0.33 | 0.19 | 0.16 | 0.14 |
| WPLR 80 | 40W | 0.33 | 0.19 | 0.16 | 0.14 |
| | 50W | 0.42 | 0.24 | 0.21 | 0.18 |
| | 60W | 0.50 | 0.29 | 0.25 | 0.22 |
| | 80W | 0.67 | 0.38 | 0.33 | 0.29 |
| WPLR 120 | 60W | 0.50 | 0.29 | 0.25 | 0.22 |
| | 90W | 0.75 | 0.43 | 0.38 | 0.32 |
| | 100W | 0.83 | 0.48 | 0.42 | 0.36 |
| | 120W | 1.00 | 0.58 | 0.50 | 0.43 |



Housing
Rugged die-cast housing with corrosion-resistant powder coating for effective protection

Emergency Battery Backup
8W battery backup - 1200 lm - 90 min

Dip switch photocell on/off
Use with or without Built-in Dusk to Dawn Photocell

PIR Motion Sensor

CCT and Wattage controller
This fixture has the function of adjusting the lumens output and color temperature on-site

Houston, Texas

Sales@orelighting.com

346-874-7955

www.orelighting.com

Note: Information contained herein is subject to change without notice.

3203 S Sam Houston Pkwy E, # 100, Houston, TX 77047

©2026 ORE Lighting INC. All rights reserved

Updated date: 05/27/2026