



Project Name:

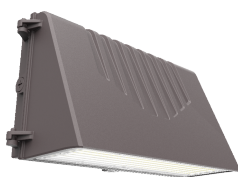
Part Number:

Fixture Type:

WPLR Series Selectable Full Cutoff Wall Pack Light



40W



80W / 120W

KEY FEATURES

- 3CCT(3000/4000/5000K) and 4 Wattages Selectable offer SKU reduction
- ADC12 Aluminum die-casting housing provides excellent heat dissipation
- Microwave motion sensor and emergency driver available
- Automated Dusk to Dawn photocell functionality
- AC120-277V & High efficacy up to 170 lm/W
- Wet location rated IP65

ORDERING INFORMATION



EXAMPLE: WPLR 40W LCS BZ UNV

Series	Wattage Selectable	CCT Selectable	Finish	Voltage	Options
WPLR Full Cutoff Wall Pack Light	15W - 2550 lm	LCS 3000K 4000K 5000K	BZ Dark Bronze RP* Custom Color	UNV 120-277V	Blank
	20W - 3400 lm				No Accessories
	30W - 5100 lm				PCTM Integrated Photocell (default)
	40W - 6800 lm				MPS PIR motion sensor
	40W - 6800 lm				EB8 Emergency Battery Backup 8W
	50W - 8500 lm				
	60W - 10200 lm				
	60W - 10200 lm				
	90W - 15300 lm				
	100W - 17000 lm				
	120W - 20400 lm				

*For custom color, please contact regional sales for details. **Accessories & Options must order separately.

For stocking opportunities, please contact your local ORE Lighting rep or sales@orelighting.com. Lead times may vary based on current inventory levels - always consult your local ORE Lighting rep for lead times and project needs.

ACCESSORIES



MPS
PIR sensor
(Sold separately)

PCTM
Integrated Photocell
(Default)

EB8
8W 1200 lm 90 min
(Sold separately)



OFFERING 4 WATTAGE AND 3 CCT FIELD SELECTABLE

The full cutoff LED wall pack is easily customizable to fit every building's design aesthetic and a mix of architectural styling and energy savings. The rugged, die-cast aluminum housing makes the wall pack virtually impenetrable to contaminants.



Accessories shown are generally stocked items; for additional accessory questions and options, please contact your local ORE Lighting rep or email sales@orelighting.com. Options for spec needs are available through a special request - please contact sales@orelighting.com with spec needs and project size.



SPECIFICATIONS

CONSTRUCTION

ADC12 cast-aluminum housing with bronze polyester powder paint for outdoor applications. Casting thermally conducts LED heat to optimize performance and long life. The design with zero uplight meets the requirements of dark sky

ELECTRICAL

Standard 50/60Hz operation with 120/277V input
0-10V dimming standard for a dimming range of 100% to 10%.

OPTICS

Tempered UV coated flat lens provide outstanding performance, uniformity and glare control.

CCT SELECTABLE

Switch selectable
3000K / 4000K / 5000K; CRI > 80+

LUMENS SELECTABLE

Selectable lumen packages ranging from 2,550 to 20,400 lm

EFFICACY

Up to 170 lumens per watt

AMBINET TEMPERATURE

Suitable for use in -40°F to 113°F (-40°C to 45°C)

MOUNTING

Die-cast back box with four conduit entry points and knockout pattern for junction box or direct wall mounting. Hinged housing and bubble level included for easy installation

LIFESPAN

Estimated 50,000 – hour LED lifespan based on IES LM-80 results and TM-21 calculations.

FINISH

Polyester Powder Dark Bronze finish. Custom colors available. Multiple stage process to produce 3 mil thickness for superior corrosion resistance and maximum durability.

CERTIFICATIONS

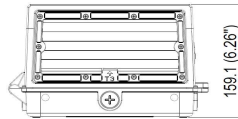
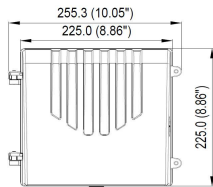
UL Listed for wet locations. Equivalent to IP65 rating

WARRANTY

5 year limited warranty. Comprehensive warranty terms can be located on www.orelighting.com

DIMENSIONS

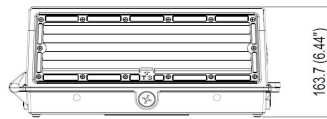
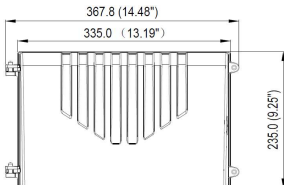
unit: mm / inch



Net Weight

5.72 lbs

40W



Net Weight

6.61 lbs

80W/120W



Security Lighting
Perimeter Lighting
Building Entrances
Walkways, etc

Houston, Texas

Sales@orelighting.com

346-874-7955

www.orelighting.com

Note: Information contained herein is subject to change without notice.

3203 S Sam Houston Pkwy E, # 100, Houston, TX 77047

©2025 ORE Lighting INC. All rights reserved

Updated date: 12/11/2025

PERFORMANCE DATA

PART NUMBER	POWER	WATTAGE	3000K		4000K		5000K	
			LUMENS	EFFICACY	LUMENS	EFFICACY	LUMENS	EFFICACY
WPLR 40	40%	15W	2,550	170 lm/w	2,550	170 lm/w	2,565	171 lm/w
	60%	20W	3,400	170 lm/w	3,400	170 lm/w	3,420	171 lm/w
	80%	30W	5,100	170 lm/w	5,100	170 lm/w	5,130	171 lm/w
	100%	40W	6,800	170 lm/w	6,800	170 lm/w	6,840	171 lm/w
WPLR 80	40%	40W	6,800	170 lm/w	6,800	170 lm/w	6,840	171 lm/w
	60%	50W	8,500	170 lm/w	8,500	170 lm/w	8,550	171 lm/w
	80%	60W	10,200	170 lm/w	10,200	170 lm/w	10,260	171 lm/w
	100%	80W	13,600	170 lm/w	13,600	170 lm/w	13,680	171 lm/w
WPLR 120	40%	60W	10,260	171 lm/w	10,260	171 lm/w	10,260	171 lm/w
	60%	90W	15,390	171 lm/w	15,390	171 lm/w	15,390	171 lm/w
	80%	100W	17,100	171 lm/w	17,100	171 lm/w	17,100	171 lm/w
	100%	120W	20,520	171 lm/w	20,520	171 lm/w	20,520	171 lm/w

ELECTRICAL LOAD

PART NUMBER	WATTAGE	Current (A)			
		120V	208V	240V	277V
WPLR 40	15W	0.13	0.07	0.06	0.05
	20W	0.16	0.09	0.08	0.07
	30W	0.25	0.14	0.13	0.10
	40W	0.33	0.19	0.16	0.14
WPLR 80	40W	0.33	0.19	0.16	0.14
	50W	0.42	0.24	0.21	0.18
	60W	0.50	0.29	0.25	0.22
	80W	0.67	0.38	0.33	0.29
WPLR 120	60W	0.50	0.29	0.25	0.22
	90W	0.75	0.43	0.38	0.32
	100W	0.83	0.48	0.42	0.36
	120W	1.00	0.58	0.50	0.43

