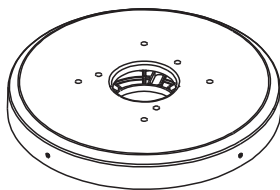
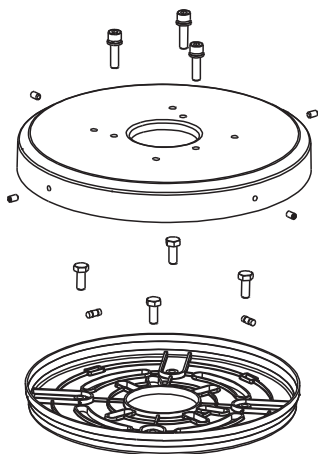
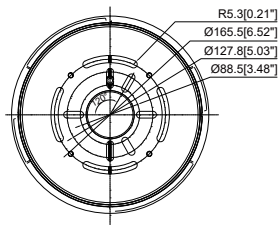
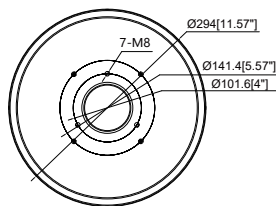


Retrofit Plate

Installation Instructions



Dimensional Drawing



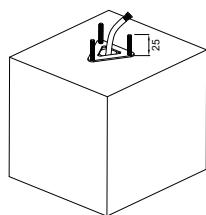
Important Caution

READ CAREFULLY BEFORE INSTALLING FIXTURE. RETAIN THESE INSTRUCTIONS FOR FUTURE REFERENCE.

WARNING: TURN OFF POWER BEFORE INSTALLATION

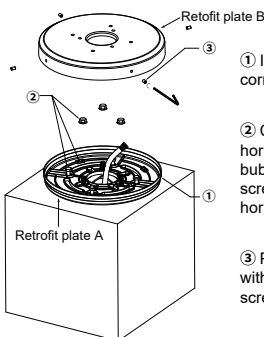
1. Review the diagrams before beginning, and make sure the fixture is grounded properly.
2. This fixture has to be installed or maintained in accordance with the application code by a professional person who is familiar with the construction and operation of the product and the hazards involved.
3. This fixture must be wired in accordance with the international electrical code and applicable local codes and ordinances.
4. Proper grounding is required to ensure personal safety. Carefully observe the correct grounding procedure under the installation section.
5. Check that the voltage is compatible with the fixture driver, and use approved connectors for all electrical connections.
6. Waterproofing for wiring connection and power supply wire must comply with NEC and local regulations.

Installation Instructions



The protruding lengths of the threads do not exceed 25mm.

1

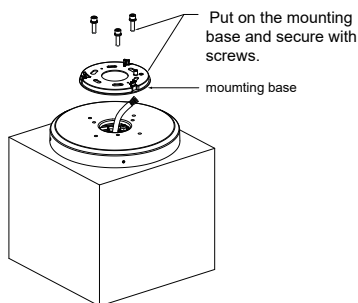


① Insert the screws through the corresponding holes for retrofit plates B.

② Check whether the retrofit plate A is in horizontal position through the level bubble. Adjustable four outer hexagon screws to make the retrofit plate A is in horizontal position, then secure with nuts.

③ Put the retrofit plate B on and secure with four headless screws and make the screwing depth consistent.

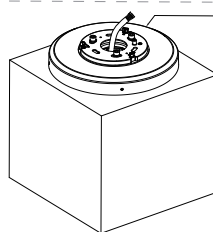
2



Put on the mounting base and secure with screws.

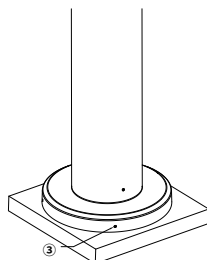
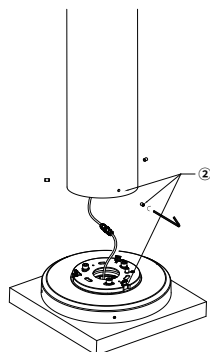
mounting base

3



Retrofit plate installation complete.

4



Install the bollard housing:

① Please prepare waterproof connector(sold separately) in advance. Attach the appropriate wires to the light fixture wires.(Refer to the wiring instructions on the last page)

② Installation the bollard housing into the mounting base and secure with hexagon socket headless screws.

③ The angle of the fixture can be adjusted by slightly loosening the screws on the side of the retrofit plate.

LINE	A BLACK
NEUTRAL	A WHITE
(V-DIM)	A PURPLE
(V-DIM)	A PINK
GROUND	A GREEN

LIGHT
FIXTURE

5