

WPLS2 Series Adjustable Wall Pack Light



80W



120W

KEY FEATURES

- 3CCT(3000/4000/5000K) and 4 Wattages Selectable offer SKU reduction
- Adjustable beam angle from 0 to 90 degrees, suitable for illuminating specific areas
- ADC12 Aluminum die-casting housing provides excellent heat dissipation
- Microwave motion sensor and emergency driver available
- Automated Dusk to Dawn photocell functionality
- AC120-277V & High efficacy up to 155 lm/W
- Wet location rated IP65

ORDERING INFORMATION



EXAMPLE: **WPLS2 80W LCS BZ UNV**

Series	Wattage Selectable	CCT Selectable	Finish	Voltage	Options
WPLS2 Adjustable Wall Pack Light	40W - 6200 lm 50W - 7750 lm 60W - 9300 lm 80W - 12400 lm	LCS 3000K 4000K 5000K	BZ Dark Bronze RP* Custom Color	UNV 120-277V	Blank No Accessories
	60W - 9300 lm 90W - 13950 lm 100W - 15500 lm 120W - 18600 lm				PCTM Intergrated Photocell MMS Microwave motion sensor EB4 Emergency Battery Backup 4W for 80W EB8 Emergency Battery Backup 8W for 120W

*For custom color, please contact regional sales for details. **Accessories & Options must order separately.

For stocking opportunities, please contact your local ORE Lighting rep or sales@orelighting.com. Lead times may vary based on current inventory levels - always consult your local ORE Lighting rep for lead times and project needs.

ACCESSORIES



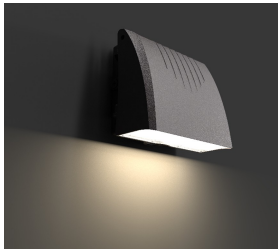
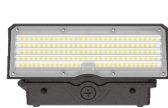
MMS
ANT-6-4T sensor
(Sold separately)



PCTM
Intergrated Photocell
(Default)



EB4 & EB8
4W/8W 600/1200 lm
(Sold separately)



OFFERING 4 WATTAGE AND 3 CCT **FIELD SELECTABLE**

The adjustable LED wall pack is easily customizable to fit every building's design aesthetic and a mix of architectural styling and energy savings. The rugged, die-cast aluminum housing makes the wall pack virtually impenetrable to contaminants.



Accessories shown are generally stocked items; for additional accessory questions and options, please contact your local ORE Lighting rep or email sales@orelighting.com. Options for spec needs are available through a special request - please contact sales@orelighting.com with spec needs and project size.

SPECIFICATIONS

CONSTRUCTION

Sealed cast-aluminum housing with optimized thermal management heat. Housing protects against moisture and environmental contaminants with diodes protected behind a glass lens.

ELECTRICAL

Standard 50/60Hz operation with 120/277V input
0-10V dimming standard for a dimming range of 100% to 10%.

CCT SELECTABLE

Switch selectable
3000K / 4000K / 5000K; CRI > 80+

LUMENS SELECTABLE

Selectable lumen packages ranging from 6,200 to 18,600 lm

EFFICACY

Up to 155 lumens per watt

AMBINET TEMPERATURE

Suitable for use in -40°F to 122°F (-40°C to 50°C)

MOUNTING

J-Box Mounting and Surface Mounting with 0° to 90° tilt angle adjustments.

LIFESPAN

Estimated 50,000 – hour LED lifespan based on IES LM-80 results and TM-21 calculations.

FINISH

Polyester Powder Dark Bronze finish. Custom colors available. Multiple stage process to produce 3 mil thickness for superior corrosion resistance and maximum durability.

IP RATING

Ingress Protection rating of IP65 for dust and water

CERTIFICATIONS

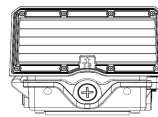
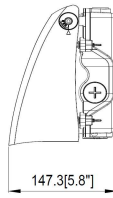
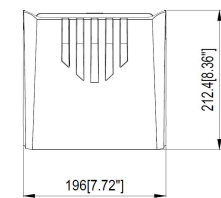
UL Listed for wet locations

WARRANTY

5 year limited warranty. Comprehensive warranty terms can be located on www.orelighting.com

DIMENSIONS

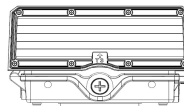
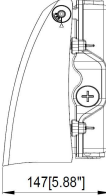
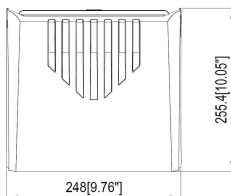
unit: mm / inch



Net Weight

4.85 lbs

80W



Net Weight

6.61 lbs

120W



Security Lighting
Perimeter Lighting
Building Entrances
Walkways, etc

Houston, Texas

Sales@orelighting.com

346-874-7955

www.orelighting.com

Note: Information contained herein is subject to change without notice.

3203 S Sam Houston Pkwy E, # 100, Houston, TX 77047

©2025 ORE Lighting INC. All rights reserved

Updated date: 11/03/2025

PERFORMANCE DATA

PART NUMBER	POWER	WATTAGE	3000K		4000K		5000K	
			LUMENS	EFFICACY	LUMENS	EFFICACY	LUMENS	EFFICACY
WPLS2 80	40%	40W	6,200	155 lm/w	6,200	155 lm/w	6,240	156 lm/w
	60%	50W	7,750	155 lm/w	7,750	155 lm/w	7,800	156 lm/w
	80%	60W	9,300	155 lm/w	9,300	155 lm/w	9,360	156 lm/w
	100%	80W	12,400	155 lm/w	12,400	155 lm/w	12,400	156 lm/w
WPLS2 120	40%	60W	9,360	156 lm/w	9,300	155 lm/w	9,360	156 lm/w
	60%	90W	14,040	156 lm/w	13,950	155 lm/w	14,040	156 lm/w
	80%	100W	15,600	156 lm/w	15,500	155 lm/w	15,600	156 lm/w
	100%	120W	18,720	156 lm/w	18,600	155 lm/w	18,720	156 lm/w

ELECTRICAL LOAD

PART NUMBER	WATTAGE	Current (A)			
		120V	208V	240V	277V
WPLS2 80	40W	0.33	0.19	0.16	0.14
	50W	0.42	0.24	0.21	0.18
	60W	0.50	0.29	0.25	0.22
	80W	0.67	0.38	0.33	0.29
WPLS2 120	60W	0.50	0.29	0.25	0.22
	90W	0.75	0.43	0.38	0.32
	100W	0.83	0.48	0.42	0.36
	120W	1.00	0.58	0.50	0.43

Housing
Sealed die-cast housing with corrosion-resistant powder coating for effective protection

Emergency Battery Backup
4W battery backup - 600 lm - 90 min
8W battery backup - 1200 lm - 90 min

Mounting
0° to +90° tilt adjustments; to meet the needs of customers with different lighting angles

CCT & Wattage & Photocell controller
This fixture has the function of adjusting the lumens output, color temperature, and Dusk to Dawn photocell functionality on-site

