

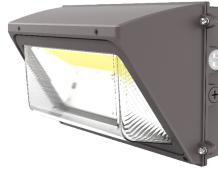


Project Name:
Part Number:
Fixture Type:

WPL1 Series Selectable Semi Cutoff Wall Pack Light



80W



120W

KEY FEATURES

- 3CCT(3000/4000/5000K) and 4 Wattages Selectable offer SKU reduction
- ADC12 Aluminum die-casting housing provides excellent heat dissipation
- Microwave motion sensor and emergency driver available
- High UV resistance polycarbonate lens version provides uniform lighting distribution and large beam angle.
- AC120-277V & High efficacy up to 150 lm/W
- Wet location rated IP65 & DLC Premium 6.0

ORDERING INFORMATION



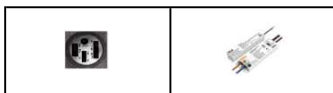
EXAMPLE: **WPL1 80W LCS BZ UNV**

Series	Wattage Selectable	CCT Selectable	Finish	Voltage	Options
WPL1 Semi Cutoff Wall Pack Light	40W - 6000 lm 50W - 7500 lm 60W - 9000 lm 80W - 12000 lm	LCS 3000K 4000K 5000K	BZ Dark Bronze RP* Custom Color	UNV 120-277V	Blank No Accessories PCTM Intergrated Photocell (default) EB8 Emergency Battery Backup 8W
	60W - 9000 lm 90W - 13500 lm 100W - 15000 lm 120W - 18000 lm				

*For custom color, please contact regional sales for details. **Accessories & Options must order separately.

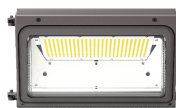
For stocking opportunities, please contact your local ORE Lighting rep or sales@orelighting.com. Lead times may vary based on current inventory levels - always consult your local ORE Lighting rep for lead times and project needs.

ACCESSORIES



PCTM
Intergrated Photocell
(Default)

EB8
8W 1200 lm 90 min
(Sold separately)



OFFERING 4 WATTAGE AND 3 CCT FIELD SELECTABLE

The full cutoff LED wall pack is easily customizable to fit every building's design aesthetic and a mix of architectural styling and energy savings. The rugged, die-cast aluminum housing makes the wall pack virtually impenetrable to contaminants.



Accessories shown are generally stocked items; for additional accessory questions and options, please contact your local ORE Lighting rep or email sales@orelighting.com. Options for spec needs are available through a special request - please contact sales@orelighting.com with spec needs and project size.

Houston, Texas | Sales@orelighting.com | 346-874-7955 | www.orelighting.com
 Note: Information contained herein is subject to change without notice. 3203 S Sam Houston Pkwy E, # 100, Houston, TX 77047
 ©2026 ORE Lighting INC. All rights reserved. Updated date: 06/01/2026

SPECIFICATIONS

CONSTRUCTION

ADC12 cast-aluminum housing with bronze polyester powder paint for outdoor applications. Casting thermally conducts LED heat to optimize performance and long life.

ELECTRICAL

Standard 50/60Hz operation with 120/277V input
0-10V dimming standard for a dimming range of 100% to 10%.

OPTICS

Tempered UV coated flat lens provide outstanding performance, uniformity and glare control.

CCT SELECTABLE

Switch selectable
3000K / 4000K / 5000K; CRI > 70+

LUMENS SELECTABLE

Selectable lumen packages ranging from 6,000 to 18,000 lm

EFFICACY

Up to 150 lumens per watt

AMBIENT TEMPERATURE

Suitable for use in -40°F to 113°F (-40°C to 45°C)

MOUNTING

The external portable mounting plate makes installation easy and simple. There's no need to open fixture housing, nor drill on housing, which greatly minimize the risk of water ingress.

LIFESPAN

Estimated 50,000 – hour LED lifespan based on IES LM-80 results and TM-21 calculations.

FINISH

Polyester Powder Dark Bronze finish. Custom colors available. Multiple stage process to produce 3 mil thickness for superior corrosion resistance and maximum durability.

CERTIFICATIONS

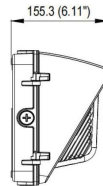
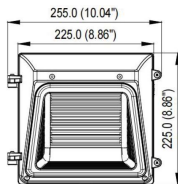
UL Listed for wet locations. Equivalent to IP65 rating
Design Lights Consortium - DLC 6.0 Premium qualified Product

WARRANTY

5 year limited warranty. Comprehensive warranty terms can be located on www.orelighting.com

DIMENSIONS

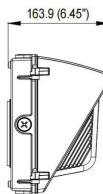
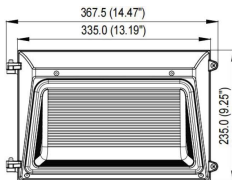
unit: mm / inch



Net Weight

4.18 lbs

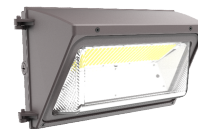
80W



Net Weight

5.95 lbs

120W



Security Lighting
Perimeter Lighting
Building Entrances
Walkways, etc

Houston, Texas

Sales@orelighting.com

346-874-7955

www.orelighting.com

Note: Information contained herein is subject to change without notice.

3203 S Sam Houston Pkwy E, # 100, Houston, TX 77047

©2026 ORE Lighting INC. All rights reserved

Updated date: 06/01/2026

PERFORMANCE DATA


PART NUMBER	POWER	WATTAGE	3000K		4000K		5000K	
			LUMENS	EFFICACY	LUMENS	EFFICACY	LUMENS	EFFICACY
WPL1 80	40%	40W	6,000	150 lm/w	6,000	150 lm/w	6,040	151 lm/w
	60%	50W	7,500	150 lm/w	7,500	150 lm/w	7,550	151 lm/w
	80%	60W	9,000	150 lm/w	9,000	150 lm/w	9,060	151 lm/w
	100%	80W	12,000	150 lm/w	12,000	150 lm/w	12,080	151 lm/w
WPL1 120	40%	60W	9,000	151 lm/w	9,000	151 lm/w	9,060	151 lm/w
	60%	90W	13,500	151 lm/w	13,500	151 lm/w	13,590	151 lm/w
	80%	100W	15,000	151 lm/w	15,000	151 lm/w	15,100	151 lm/w
	100%	120W	18,000	151 lm/w	18,000	151 lm/w	18,120	151 lm/w

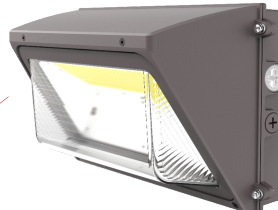
ELECTRICAL LOAD

PART NUMBER	WATTAGE	Current (A)			
		120V	208V	240V	277V
WPL1 80	40W	0.33	0.19	0.16	0.14
	50W	0.42	0.24	0.21	0.18
	60W	0.50	0.29	0.25	0.22
	80W	0.67	0.38	0.33	0.29
WPL1 120	60W	0.50	0.29	0.25	0.22
	90W	0.75	0.43	0.38	0.32
	100W	0.83	0.48	0.42	0.36
	120W	1.00	0.58	0.50	0.43

Housing
Rugged die-cast housing with corrosion-resistant powder coating for effective protection

Emergency Battery Backup
8W battery backup - 1200 lm - 90 min





Dip switch photocell on/off
Use with or without Built-in Dusk to Dawn Photocell

CCT and Wattage controller
This fixture has the function of adjusting the lumens output and color temperature on-site

