

## WPLN3 Series Selectable Full Cutoff Wall Pack Light



80W



120W

### KEY FEATURES

- 3CCT(3000/4000/5000K) and 4 Wattages Selectable offer SKU reduction
- Durable die-casting aluminum housing provides excellent heat dissipation
- Microwave motion sensor and emergency driver available
- Automated Dusk to Dawn photocell functionality
- AC120-277V & High efficacy up to 130 lm/W
- Wet location rated IP65

### ORDERING INFORMATION



EXAMPLE: **WPLN3 80W LCS BZ UNV**

Series	Wattage Selectable	CCT Selectable	Finish	Voltage	Options
<b>WPLN3</b> Full Cutoff Wall Pack Light	40W - 5200 lm 50W - 6500 lm 60W - 7800 lm 80W - 10400 lm	<b>LCS</b> 3000K 4000K 5000K	<b>BZ</b> Dark Bronze <b>RP*</b> Custom Color	<b>UNV</b> 120-277V	<b>Blank</b> No Accessories <b>PCTM</b> Integrated Photocell <b>MMS</b> Microwave motion sensor <b>EB</b> Emergency Battery Backup 4W & 8W
	60W - 7800 lm 90W - 11700 lm 100W - 13000 lm 120W - 15600 lm				

\*For custom color, please contact regional sales for details. \*\*Accessories & Options must order separately.

For stocking opportunities, please contact your local ORE Lighting rep or sales@orelighting.com. Lead times may vary based on current inventory levels - always consult your local ORE Lighting rep for lead times and project needs.

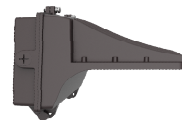
### ACCESSORIES



**MMS**  
HD06VCRH sensor  
(Sold separately)

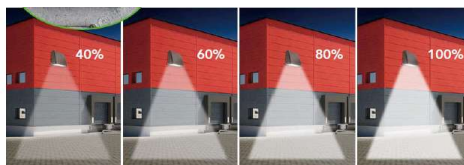
**PCTM**  
Integrated Photocell  
(Sold separately)

**EB**  
4W/8W 1200 lm 90 min  
(Sold separately)



### OFFERING 4 WATTAGE AND 3 CCT FIELD SELECTABLE

The full cutoff LED wall pack is easily customizable to fit every building's design aesthetic and a mix of architectural styling and energy savings. The rugged, die-cast aluminum housing makes the wall pack virtually impenetrable to contaminants.



Accessories shown are generally stocked items; for additional accessory questions and options, please contact your local ORE Lighting rep or email sales@orelighting.com. Options for spec needs are available through a special request - please contact sales@orelighting.com with spec needs and project size.



## SPECIFICATIONS

### CONSTRUCTION

Durable die-cast aluminum housing with bronze polyester powder paint for outdoor applications. Casting thermally conducts LED heat to optimize performance and long life. The design with zero uplight meets the requirements of dark sky

### ELECTRICAL

Standard 50/60Hz operation with 120/277V input  
0-10V dimming standard for a dimming range of 100% to 10%.

### OPTICS

Tempered UV coated flat lens provide outstanding performance, uniformity and glare control.

### CCT SELECTABLE

Switch selectable  
3000K / 4000K / 5000K; CRI > 70+

### LUMENS SELECTABLE

Selectable lumen packages ranging from 5,200 to 15,600 lm

### EFFICACY

Up to 130 lumens per watt

### AMBINET TEMPERATURE

Suitable for use in -40°F to 113°F (-40°C to 45°C)

### MOUNTING

Die-cast back box with four conduit entry points and knockout pattern for junction box or direct wall mounting. Hinged housing and bubble level included for easy installation

### LIFESPAN

Estimated 50,000 – hour LED lifespan based on IES LM-80 results and TM-21 calculations.

### FINISH

Polyester Powder Dark Bronze finish. Custom colors available. Multiple stage process to produce 3 mil thickness for superior corrosion resistance and maximum durability.

### CERTIFICATIONS

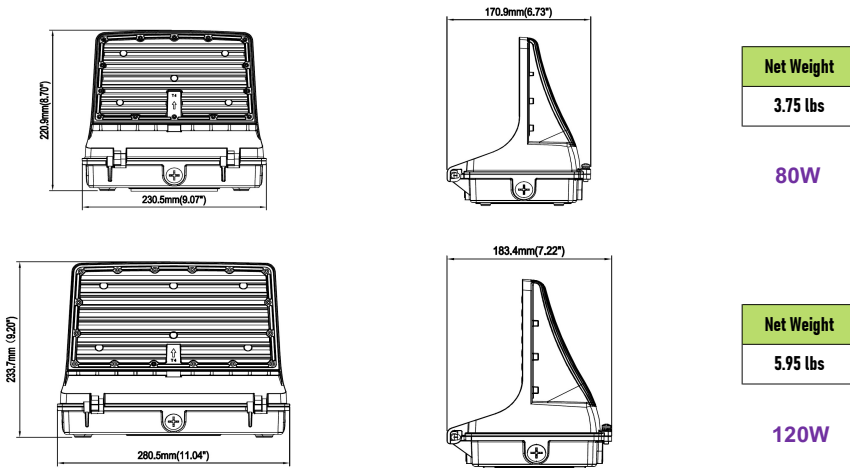
UL Listed for wet locations. Equivalent to IP65 rating

### WARRANTY

5 year limited warranty. Comprehensive warranty terms can be located on [www.orelighting.com](http://www.orelighting.com)

## DIMENSIONS

unit: mm / inch



Houston, Texas

[Sales@orelighting.com](mailto:Sales@orelighting.com)

346-874-7955

[www.orelighting.com](http://www.orelighting.com)

Note: Information contained herein is subject to change without notice.

©2025 ORE Lighting INC. All rights reserved

3203 S Sam Houston Pkwy E, # 100, Houston, TX 77047

Updated date: 07/01/2025

## PERFORMANCE DATA

PART NUMBER	POWER	WATTAGE	3000K		4000K		5000K	
			LUMENS	EFFICACY	LUMENS	EFFICACY	LUMENS	EFFICACY
WPLN3 80	40%	40W	5,200	130 lm/w	5,200	130 lm/w	5,240	131 lm/w
	60%	50W	6,500	130 lm/w	6,500	130 lm/w	6,550	131 lm/w
	80%	60W	7,800	130 lm/w	7,800	130 lm/w	7,860	131 lm/w
	100%	80W	10,400	130 lm/w	10,400	130 lm/w	10,480	131 lm/w
WPLN3 120	40%	60W	7,860	131 lm/w	7,860	131 lm/w	7,860	131 lm/w
	60%	90W	11,790	131 lm/w	11,790	131 lm/w	11,790	131 lm/w
	80%	100W	13,100	131 lm/w	13,100	131 lm/w	13,100	131 lm/w
	100%	120W	15,720	131 lm/w	15,720	131 lm/w	15,720	131 lm/w

## ELECTRICAL LOAD

PART NUMBER	WATTAGE	Current (A)			
		120V	208V	240V	277V
WPLN3 80	40W	0.33	0.19	0.16	0.14
	50W	0.42	0.24	0.21	0.18
	60W	0.50	0.29	0.25	0.22
	80W	0.67	0.38	0.33	0.29
WPLN3 120	60W	0.50	0.29	0.25	0.22
	90W	0.75	0.43	0.38	0.32
	100W	0.83	0.48	0.42	0.36
	120W	1.00	0.58	0.50	0.43

