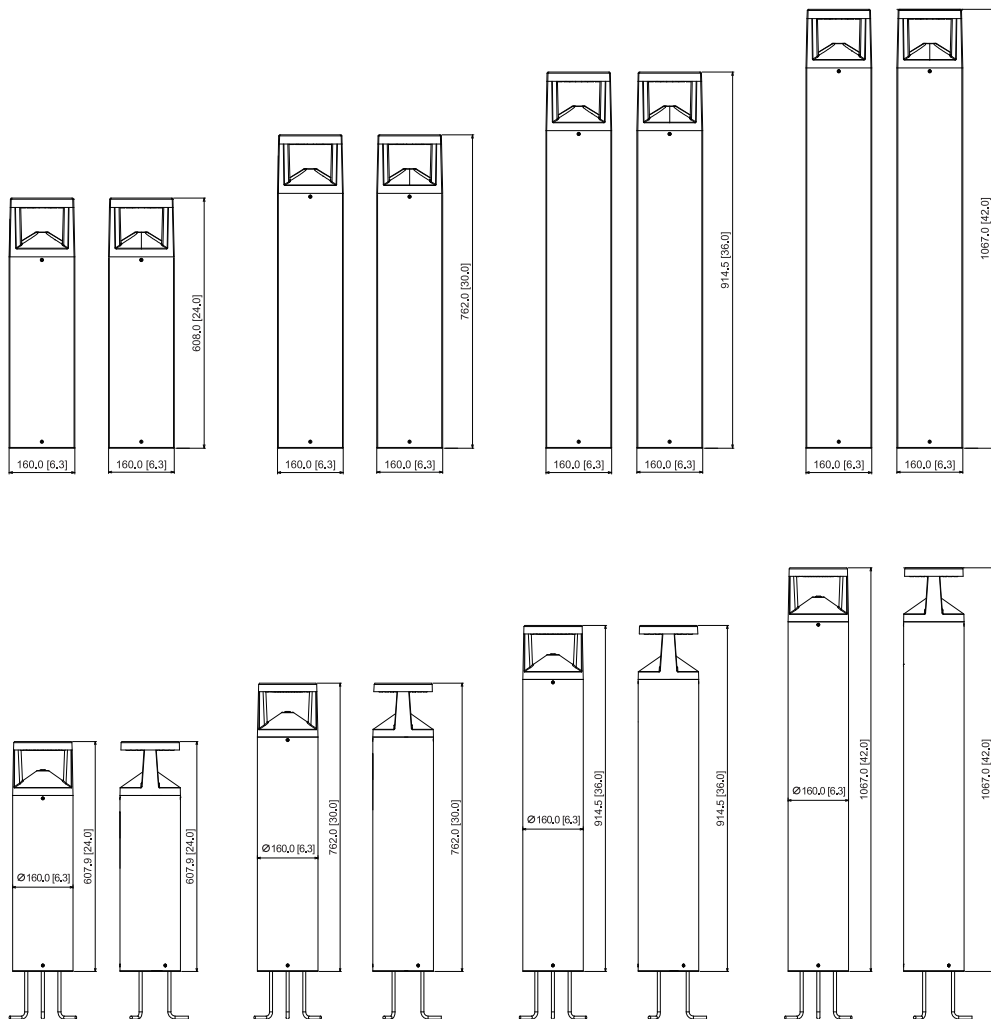


DIMENSIONAL DRAWING:



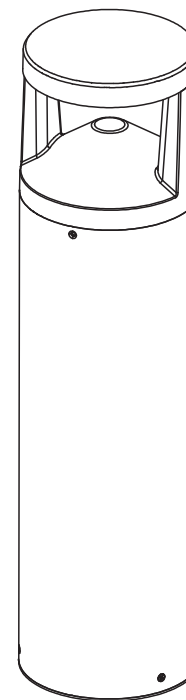
LED Bollard Lighting Installation Instructions

IMPORTANT CAUTION:

READ CAREFULLY BEFORE INSTALLING FIXTURE. RETAIN THESE INSTRUCTIONS FOR FUTURE REFERENCE.

WARNING: TURN OFF POWER BEFORE INSTALLATION.

1. Review the diagrams before beginning, and make sure the fixture is grounded properly.
2. This fixture has to be installed or maintained in accordance with the application code by a professional person who is familiar with the construction and operation of the product and the hazards involved.
3. This fixture must be wired in accordance with the international electrical code and applicable local codes and ordinances.
4. Proper grounding is required to ensure personal safety. Carefully observe the correct grounding procedure under the installation section.
5. Check that the voltage is compatible with the fixture driver, and use approved connectors for all electrical connections.
6. Please do not disassemble, repair, or modify the light fixtures without permission. Avoid causing damage to the light fixtures and other undesirable consequences.

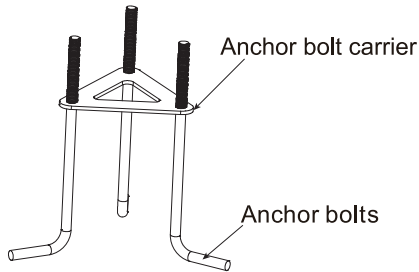


Installation Instructions:

WARNING: TURN OFF POWER BEFORE CONNECTING WIRES.

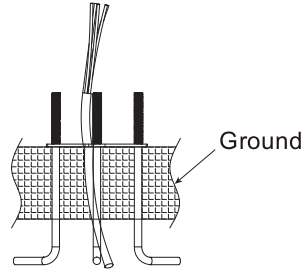
Step 1

The anchor bolts are installed on the fixed bracket.



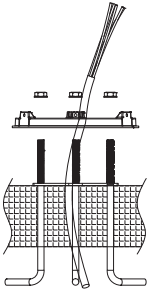
Step 2

Get the anchor bolt carrier assembled and reserve connection wire, then install the three anchor bolts into the concrete.



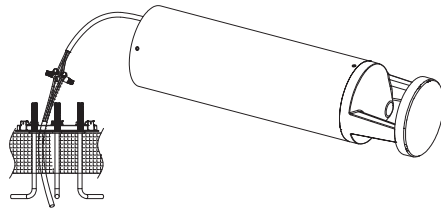
Step 3

Fix the fixed cover on the anchor bolts with nuts.



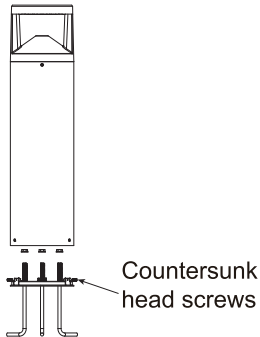
Step 4

Make electrical connections as shown in the wiring diagram. Use approved wiring connectors and wire to local codes.



Step 5

Countersunk head screws to fix the bollard base.



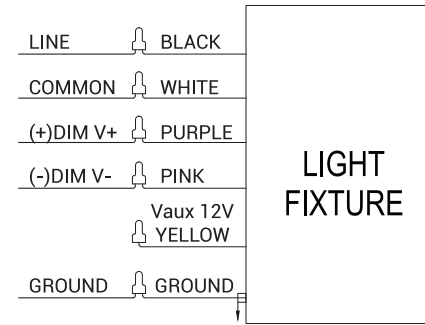
WIRING INSTRUCTION:

Universal voltage driver permits operation at 120V thru 277V, 50 or 60 Hz. For 0-10V Dimming, follow the wiring directions.

1. Connect the black fixture lead to the LINE supply lead.
2. Connect the white fixture lead to the COMMON supply lead.
3. Connect the GROUND wire from fixture to supply ground.

Do NOT connect the GROUND of the dimming fixture to the output.

4. Connect the purple fixture lead to the (V+) DIM lead.
5. Connect the pink fixture lead to the (V-) DIM lead.
6. Cap the yellow fixture lead, if present. Do NOT connect.



ANCHOR BOLT TEMPLATE FOR BLED BOLLARD

Drawing not to scale. Use the actual mounting plate as your template.

