

Square Non-Tapered Steel Pole

SPECIFICATIONS

POLE SHAFT

The pole shaft is a one section design, each section being fabricated from standard 7 or 11 gauge steel. The pole shaft material is a weldable grade hot rolled commercial quality carbon steel with a guaranteed minimum yield strength of 55,000 psi after fabrication. Each section is one-piece construction with a full length longitudinal weld and is cylindrical in cross-section having a uniform taper of 0.14 inches of diameter change per foot of length.

BASE PLATE

The anchor base is fabricated from commercial quality hot rolled carbon steel plate that meets or exceeds a minimum yield strength of 36,000 psi. The anchor base telescopes the pole shaft and is circumferentially welded top and bottom. All welds are performed in accordance with the American Welding Society specification AWS D1.1, latest edition.

ANCHOR BOLTS

Anchor bolts are fabricated from commercial quality hot rolled carbon steel bar that meets or exceeds a minimum yield strength of 55,000 psi. Four properly sized anchor bolts, each with two regular hex nuts and washers, are furnished and shipped with all poles unless otherwise specified. Anchor bolts shall have the threaded end galvanized a minimum of 8 inches in accordance with ASTM A153. Fully galvanized anchor bolts are available upon request.

HANDHOLE

An oval reinforced gasketed handhole, having a nominal 3" x 5" inside opening, located 1'-6" above base, is standard on all poles. A grounding provision is located inside the handhole ring.

FINISH

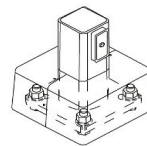
Galvanized - All exterior and interior metal surfaces are hot dip galvanized in accordance with ASTM A123. During the hot dip galvanizing process the molten zinc reacts with the steel surface forming a barrier that becomes an extension of the steel surface.

SIDE DRILL

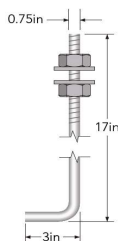
Standard length poles are predrilled holes on 4 sides. Also with hole plugs for unused predrilled locations.



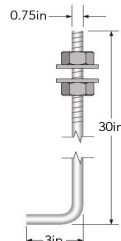
10FT/15FT/20FT/25FT/30FT



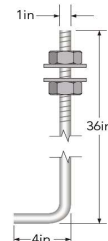
ANCHOR BOLTS



Anchor Bolt for 10ft, 15ft, 20ft



Anchor Bolt for 25ft



Anchor Bolt for 30ft

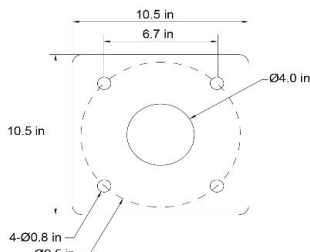
ORDERING INFO

EXAMPLE: **SNSP 20 11G 4 PBS4 PAB4-1 PRC4**

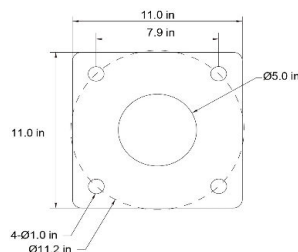
Series	Height	Thickness	Size	Finish	Options
SNSP Square Non-Tapered Steel Pole	10 - 10ft	7G (7 Gauge *)	4 (4" Diameter)	BLANK Dark Bronze	PBS4 - 4" Square Base Cover PBS5 - 5" Square Base Cover PAB4-1 - Anchor Bolt (4 pcs) for 10-20FT PAB4-2 - Anchor Bolt (4 pcs) for 25FT PAB4-3 - Anchor Bolt (4 pcs) for 30FT PRC4 - 4" Square Top Cap PRC5 - 5" Square Top Cap
	15 - 15ft	11G (11 Gauge)			
	20 - 20ft				
	25 - 25ft				
	30 - 30ft		5 (5" Diameter *)		
*5" only for 30ft square steel poles					
*For 7 Gauge pole, please contact regional sales for details					

DIMENSIONS

SERIES	HEIGHT	GAUGE	SIZE (in)	Wall thick (in)	WEIGHT (LBS)	Maximum EPA with 1.3 Gust Factor					
						80 mph	Max Weight	90 mph	Max Weight	100 mph	Max Weight
SNSP-10FT4	10ft	11	4"	0.120	76	30.6	765	23.8	595	18.9	470
SNSP-15FT4	15ft			0.120	113	17.9	450	13.5	335	10.3	250
SNSP-20FT4	20ft			0.120	138	9.6	240	6.7	165	4.5	150
SNSP-25FT4	25ft			0.120	170	4.8	150	2.6	100	1.0	50
SNSP-30FT5	30ft		5"	0.179	380	10.7	267	6.7	167	3.9	100

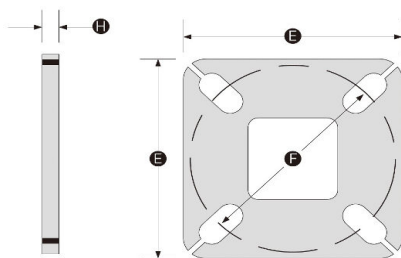


4" Screw Positioning Plate



5" Screw Positioning Plate

ANCHORAGE



Base Plate with Slots or Holes

Anchor Base Size	Wall thick H	Base Plate E	Bolt Circle F	Bolt Circle Range	Bolt Projection
4"	0.75"	10.5"	9.5"	8 - 11 in	3.75"
5"	1"	11"	11.3"	10.6 - 12 in	4.87"

OPTIONS (SOLD SEPARATELY)



BASE COVER

PBS4 - 4" Square Base Cover

PBS5 - 5" Square Base Cover
for 30ft pole



RAINPROOF COVER

PRC4 - For 4" Square Top Cap

PRC5 - For 5" Square Top Cap



ANCHOR BOLT & TEMPLATE

PAB4-1 - Anchor Bolt - 17 inch
Per set 4 pcs bolts / 10.34 lbs

PAB4-2 - Anchor Bolt - 30 inch
Per set 4 pcs bolts / 20.31 lbs

PAB4-3 - Anchor Bolt - 36 inch
Per set 4 pcs bolts / 25.74 lbs