

Round Non-Tapered Steel Pole

SPECIFICATIONS

POLE SHAFT

The pole shaft is single piece construction, being fabricated from a weldable grade carbon steel structural tubing and shall conform to ASTM A500 Grade C with a minimum yield strength of 50,000 psi. The pole shaft has a full-length longitudinal resistance weld and is uniformly cylindrical in cross-section with round sides and excellent torsional properties.

BASE PLATE

The anchor base is fabricated from commercial quality hot rolled carbon steel plate that meets or exceeds a minimum yield strength of 36,000 psi. The anchor base telescopes the pole shaft and is circumferentially welded top and bottom. All welds are performed in accordance with the American Welding Society specification AWS D1.1, latest edition.

ANCHOR BOLTS

Anchor bolts are fabricated from commercial quality hot rolled carbon steel bar that meets or exceeds a minimum yield strength of 55,000 psi. Four properly sized anchor bolts, each with two regular hex nuts and washers, are furnished and shipped with all poles unless otherwise specified. Anchor bolts shall have the threaded end galvanized a minimum of 8 inches in accordance with ASTM A153. Fully galvanized anchor bolts are available upon request.

HANDHOLE

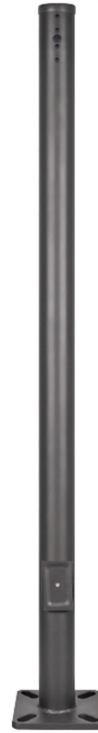
An oval reinforced gasketed handhole, having a nominal 3" x 5" inside opening, located 1'-6" above base, is standard on all poles. A grounding provision is located inside the handhole ring.

FINISH

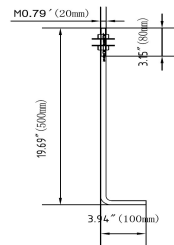
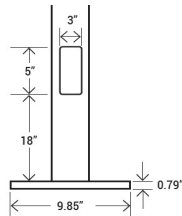
Galvanized - All exterior and interior metal surfaces are hot dip galvanized in accordance with ASTM A123. During the hot dip galvanizing process the molten zinc reacts with the steel surface forming a barrier that becomes an extension of the steel surface.

SIDE DRILL

Standard length poles are predrilled holes on 4 side, with a Tenon standard packaged on top. Also with hole plugs for unused predrilled locations.



10FT/15FT/20FT/25FT/30FT



ORDERING GUIDE

Series	Height	Gauge	Size	Finish	Options
RNSP Round Non-Tapered Steel Pole	10 - 10ft	11	*3"	BLANK Dark Bronze	PRCS3 - 3" Round Base Cover for 10FT PRCS4 - 4" Round Base Cover PRCS5 - 5" Round Base Cover for 30FT PAB4 - Anchor Bolt (4 pcs) for 10-25FT PAB430 - Anchor Bolt (4 pcs) for 30FT PTP01 - Template for 10-25FT Round pole PTP02 - Template for 30FT Round pole PTP03 - Cross Template for 30FT Round pole
	15 - 15ft		4"		
	20 - 20ft		*5"		
	25 - 25ft				
30 - 30ft					
					*3"x3" only for 10ft round steel poles
					*5"x5" only for 30ft round steel poles

DIMENSION DATA

SERIES	HEIGHT	GAUGE	SIZE	BOLT SIZE	WEIGHT (LBS)	EPA 70	EPA 80	EPA 90	EPA 100	EPA 110	EPA 120
RNSP-10FT3	10ft	11	3"x3"	M0.79"x19.69"x3.94"	72	26.2	22.5	20.1	16.4	11.3	9.6
RNSP-15FT4	15ft		95		17.8	14.6	12.3	10.9	8.2	6.4	
RNSP-20FT4	20ft		4"x4"		143	11.9	9.1	8.8	6.8	5.5	3.8
RNSP-25FT4	25ft		176		10.9	7.9	6.7	5.3	4.6	3.1	
RNSP-30FT5	30ft		5"x5"	M0.79"x36"x4"	242	8.5	6.6	5.7	4.2	3.2	2.1

OPTIONS (SOLD SEPARATELY)



BASE COVER

PRCS3 - 3" Round Base Cover for 10ft pole

PRCS4 - 4" Round Base Cover for 15ft / 20ft / 25ft

PRCS5 - 5" Round Base Cover for 30ft pole



TEMPLATE

PTP01 - Screw Positioning Plate for 10-25FT Round pole

PTP02 - Screw Positioning Plate for 30FT Round pole

PTP03 - Cross Screw Positioning Plate for 30FT Round pole



ANCHOR BOLT

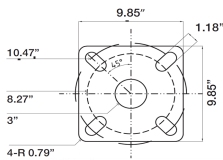
PAB4 - Anchor Bolt
Per set 4 pcs bolts / 10.34 lbs

PAB430 - Anchor Bolt - 36 inch
Per set 4 pcs bolts / 24.88 lbs

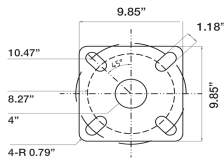


DIMENSION

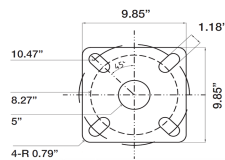
3" Flange



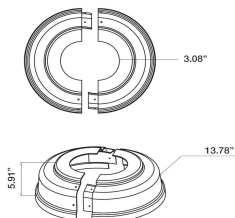
4" Flange



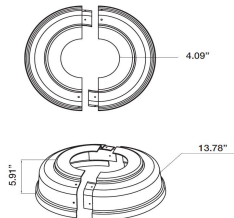
5" Flange



3" Base Cover



4" Base Cover



5" Base Cover

